

FOR SPECIFICATION REFER TO DRAWING 863-1-7

ALL NEW BUILDING WORK IS TO BE DONE IN ACCORDANCE WITH AUSTRALIAN STANDARD 3956-2009 SECTION 6 CONSTRUCTION FOR BUSHFIRE ATTACK LEVEL 19 (BAL-19)

BASIX NOTES

REFER CERTIFICATE NUMBER : A

LIGHTING

- ENSURE A MINIMUM OF 40% OF NEW OR ALTERED LIGHT FIXTURES ARE FITTED WITH FLUORESCENT, COMPACT FLUORESCENT OR (LED) LAMPS.

FIXTURES

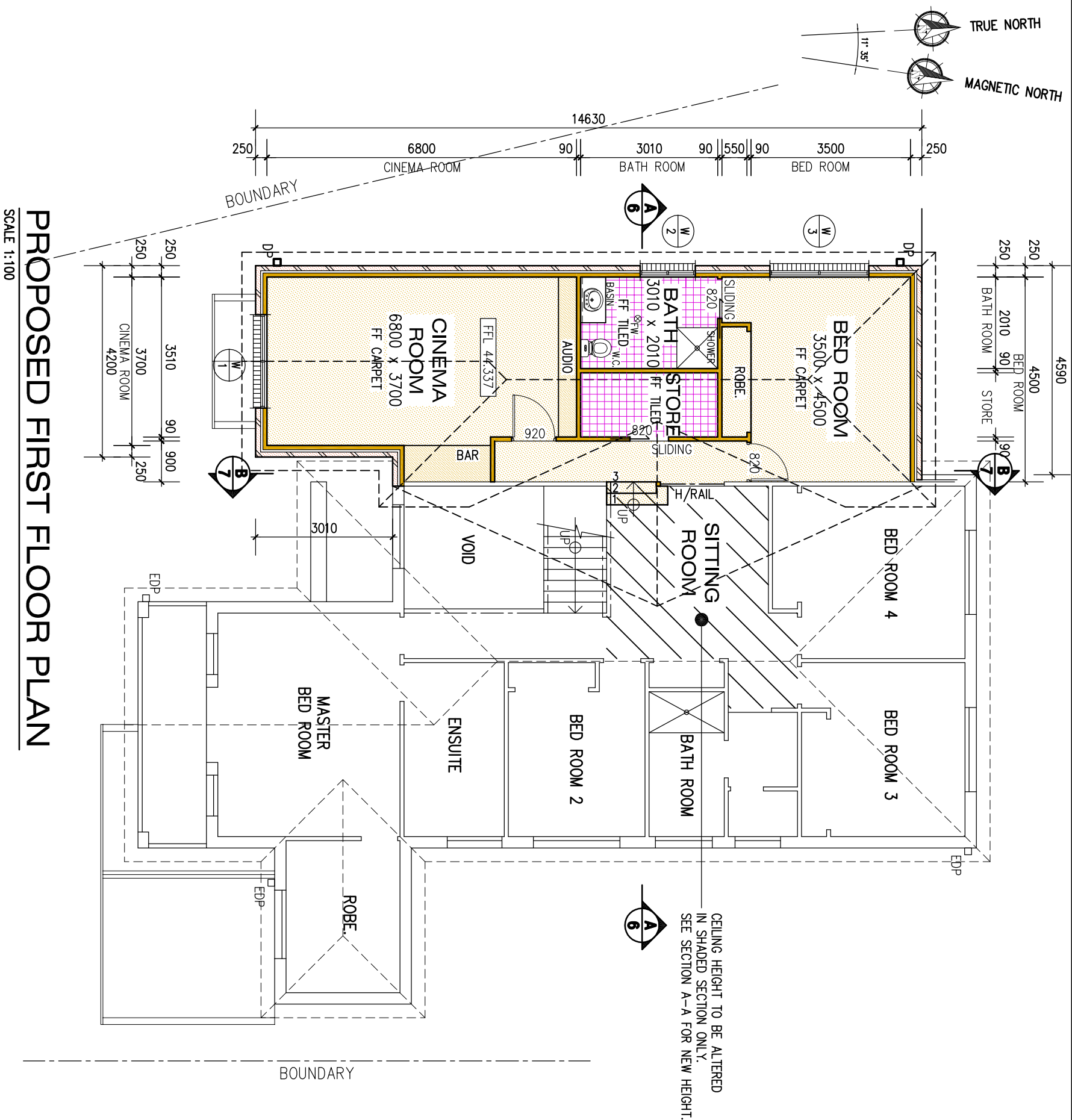
- NEW OR ALTERED SHOWER HEADS ARE TO HAVE A MINIMUM 3 STAR FLOW RATING.
- NEW OR ALTERED TAPS TO BE FITTED WITH A MINIMUM 3 STAR FLOW RATING.
- NEW OR ALTERED TOILETS ARE TO HAVE A MINIMUM 3 STAR FLOW RATING

INSULATION REQUIREMENTS

- NEW WALL INSULATION TO BE A MINIMUM OF R.1.16 (R1.70 INCLUDING CONSTRUCTION)
- NEW CEILING INSULATION TO BE A MINIMUM OF R3.00 (UP)
- SOLAR ABSORPTANCE < 0.70
- NEW ROOF INSULATION TO BE FOIL/SARKING

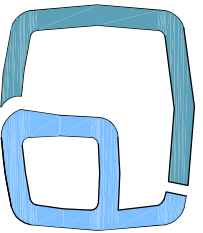
WINDOWS

- THE APPLICANT MUST INSTALL THE WINDOWS, GLAZED DOORS AND SHADING DEVICES IN ACCORDANCE WITH THE SPECIFICATIONS LISTED IN THE BASIX CERTIFICATE.
- ALL WINDOWS AND GLAZED DOORS WITH STANDARD FRAMES ARE TO HAVE A U-VALUE AND SOLAR HEAT GAIN COEFFICIENT (SHGC) NO GREATER THAN SHOWN IN THE BASIX CERTIFICATE.
- ALL WINDOWS AND GLAZED DOORS WITH PYROLYTIC LOW-E GLASS ARE TO HAVE A U-VALUE AND SOLAR HEAT GAIN COEFFICIENT (SHGC) NO GREATER THAN SHOWN IN THE BASIX CERTIFICATE.
- TOTAL SYSTEM U-VALUES AND SHGCs MUST BE CALCULATED IN ACCORDANCE WITH NATIONAL FENESTRATION RATING COUNCIL (NFERC) CONDITIONS.
- PROJECTIONS DESCRIBED IN MILLIMETRES, THE LEADING EDGE OF EACH EAVE MUST BE NO MORE THAN 500mm ABOVE THE HEAD OF THE WINDOW AND NO MORE THAN 2400mm ABOVE THE SILL.
- PERGOLAS WITH POLYCARBONATE ROOF OR SIMILAR TRANSLUCENT MATERIAL MUST HAVE A SHADING COEFFICIENT OF LESS THAN 0.35
- PERGOLAS WITH FIXED BATTENS MUST HAVE BATTENS PARALLEL TO THE WINDOW OR GLAZED DOOR ABOVE WHICH THEY ARE SITUATED, UNLESS THE PERGOLA ALSO SHADES A PERPENDICULAR WINDOW. THE SPACING BATTENS MUST NOT BE MORE THAN 50mm.



PROPOSED FIRST FLOOR PLAN

SCALE 1:100



CompuDraft Pty Ltd

A.B.N. 59 769 783 493

UNIT 18, 7 ANELLA AVENUE CASTLE HILL NSW 2154

PH (02) 8850-0911 FAX (02) 8850-3511

EMAIL: info@compudraft.com.au

WEB: www.compu draft.com.au

			(c) COPYRIGHT COMPUDRAFT PTY. LTD. NO PART OF THIS WORK MAY BE REPRODUCED OR COMMUNICATED IN ANY FORM OR BY ANY MEANS WITHOUT THE WRITTEN PERMISSION OF COMPUDRAFT PTY. LIMITED.
ISSUE	DATE	APPD	DESCRIPTION
REVISIONS			
SCALE	1:100	PROPOSED FIRST FLOOR ADDITION AT [REDACTED]	
DATE	22-03-13		
DRAWN	A.W.		
CHECKED	J.M.H.		
		JOB NUMBER	DRAWING NUMBER
		863-1	3 of 8